

## From single crystals to ceramics on piezoelectric materials

Toshio Ogawa

Department of Electrical, Electronics and Information Engineering, Shizuoka Institute of Science and Technology, 2200-2, Toyosawa, Fukuroi, Shizuoka 437-8555, Japan

### Abstract

Recently, we found a giant electromechanical coupling factor of  $k_{31}$  mode over 80% and a piezoelectric  $d_{31}$  constant nearly -1700 pC/N in  $\text{Pb}[(\text{Zn}_{1/3}\text{Nb}_{2/3})_{0.91}\text{Ti}_{0.09}]\text{O}_3$  (PZNT91/09) relaxor single crystals in addition to the large  $k_{33}$  mode of over 92 %. The origin of the giant  $k_{31}$  and  $d_{31}$  was due to realize the mono-domain structure in the direction perpendicular to the poling field as well as in the direction parallel to the poling field. Through our studies, the poling field (E) dependence of ferroelectric properties and their domain structures was investigated. The mono-domain structure was achieved at  $E=1000$  V/mm~ $1500$  V/mm with decreasing the frequency constant ( $fc_{31}$ : half of the bulk wave velocity on  $k_{31}$  mode) and the giant  $k_{31}$  was obtained at the minimum  $fc_{31}$  of 522 Hz-m. While the mono-domain was divided into two domains over  $E=1500$  V/mm, the  $k_{31}$  decreased and  $fc_{31}$  increased. As the formation of a domain wall, which corresponds to a grain boundary in ceramics, caused the increase of the  $fc_{31}$  (Young's modulus), the material became mechanically hard. We evaluated PZNT91/09 single crystals with (100), (110) and (111) planes for their aging properties. Large aging occurred in the crystals with (110) plane, on the other hand, little aging in (100) and (111) planes. Namely, the ferroelectric and their aging properties depended on the crystal planes. Since ceramics are composed of the small-size single crystals, our results were very helpful to understand the roles of grain boundaries, grain size, domain size and crystal planes in piezoelectric materials. Furthermore, from the relationships between coupling factors of  $k_{31}$ ,  $k_{33}$  and Young's modulus on various kinds of single crystals and ceramics, a future research on the piezoelectric materials including lead free materials was proposed.

### 1. Introduction

Ferroelectric single crystals made of compounds such as  $\text{Pb}[(\text{Zn}_{1/3}\text{Nb}_{2/3})_{0.91}\text{Ti}_{0.09}]\text{O}_3$  (PZNT91/09) have been attracting considerable attention, because of the large electromechanical coupling factor of the  $k_{33}$  mode of over 92 %.<sup>1</sup> Recently, we found a giant electromechanical coupling factor of  $k_{31}$  mode and a piezoelectric  $d_{31}$  constant in ferroelectric single crystals composed of PZNT91/09 poled along [001] of the original cubic direction.<sup>2</sup> The origin of the giant  $k_{31}$  and  $d_{31}$  was due to realize the mono-domain structure in the crystal.<sup>3</sup> In this study, we evaluate the piezoelectricity of the PZNT91/09 single crystals, focusing on particularly the poling field and the crystal plane dependences of the  $k_{31}$  mode to compare with the ones of PZT ceramics.

### 2. Experimental

As-grown PZNT91/09 single crystals were cut along [001], [110] and [111] of the original cubic direction confirmed by X-ray diffraction (XRD) and from Laue photographs. The single-crystal plate samples with dimensions of  $4^{\text{W}} \times 13^{\text{L}} \times 0.36^{\text{T}}$  mm were prepared to evaluate the poling field and the crystal plane dependences of the ferroelectric properties such as dielectric constant ( $\epsilon_r$ ),  $k_{31}$  and  $k_{33}$ . Gold electrodes for the following DC field applying and electrical measurements were fabricated by conventional sputtering. DC poling was conducted at  $40^\circ\text{C}$  for 10 min by applying 400~2000 V/mm to obtain plate ( $4^{\text{W}} \times 13^{\text{L}}$  mm) resonators with various crystal planes.

After applying the field, the dielectric and piezoelectric properties were measured at room temperature using an LCR meter (HP4263A), an impedance/gain-phase analyzer (HP4194A).

### 3. Results and discussion

#### 3.1. Different roots on piezoelectricity in single crystals and ceramics

High piezoelectricity in ferroelectric materials is realized in the cases of (100) plane PZNT91/09 single crystals with the giant  $k_{31}$  as well as PZT ceramics. Figures 1 (a) and (b) show the temperature dependences of  $k_{31}$ ,  $k_{33}$  and frequency constant of  $k_{31}$  and  $k_{33}$  modes ( $fc_{31}$  and  $fc_{33}$ ), which corresponds to the half of the bulk wave velocity, in PZNT91/09 single crystals. While the coupling factors ( $k$ ), especially  $k_{31}$  became relatively high values in the rhombohedral phase in comparison with the ones in tetragonal phase, the  $fc_{31}$  showed less than 600 Hz-m in the rhombohedral phase. These phenomena were different from PZT ceramics. In PZT ceramics, the maximum  $k$  and minimum  $fc$  were obtained concurrently at the phase boundary between the rhombohedral and the tetragonal phases (MPB).<sup>4</sup> The reason to obtain the high  $k$  at the MPB is thought that the number of the polarization axes easy to align in the direction of the DC poling field increase from 8 axes in rhombohedral or 6 axes in tetragonal to 14 (8+6) axes near the MPB. However, the giant  $k_{31}$  was obtained only in the rhombohedral PZNT91/09, not the existence near the MPB. This means that the origin of high piezoelectricity in PZNT91/09 single crystals is different from the origin in PZT ceramics. It is believed that the giant  $k_{31}$  in rhombohedral PZNT91/09 was due to the mechanical softness of the materials with rhombohedral phase easy to symmetrical deform by the poling field.<sup>3,5</sup>

#### 3.2. Roles of grain boundaries

Figure 2 show the ferroelectric domain structures and their impedance responses on PZNT91/09 single crystals with (100) plane under the various DC poling field ( $E$ ) at the poling temperature of 40 degree C and the time of 10 min. Mono-domain single crystals with giant  $k_{31}$  were obtained from the  $E$  of 1000 V/mm to 1500 V/mm. On the other hand, the mono-domain was divided into two while applying the  $E$  over 1500 V/mm; as a result, the  $k_{31}$  was decreased. The formation of a domain wall or a grain boundary in the PZNT91/09 single crystal caused the rise in resonant frequency ( $fr$ ) (Fig. 2 (b)), namely the  $fc_{31}$  ( $fr \times L$ ) and Young's modulus, the material became mechanically hard. Figure 3 show the impedance response vs. frequency on  $k_{31}$  ( $13^L$  mm) and  $k_{32}$  ( $4^W$  mm) modes. There was the great difference between  $k_{31}$  (80%) and  $k_{32}$  (58%). Since ceramics are composed of the small-size single crystals, our results were very helpful to understand the roles of grain boundaries, grain size and domain size in piezoelectric materials.

#### 3.3. Aging characteristics

Figures 4 (a) ~ (c) shows the aging characteristics for dielectric constant ( $\epsilon_r$ ),  $k_{31}$  and  $fc_{31}$  vs. time at room temperature, respectively. Although the  $\epsilon_r$  of (100) and (111) planes became constant with time, the  $\epsilon_r$  of (110) crystals increased with time and both the values of the two samples reached to a constant of 6,000 in Fig. 4 (a). Therefore, it is said that the domain structure of the (110) plane plate ( $4^W \times 13^L$  mm) after poling change into a stable domain configuration with time. The same tendencies were observed in the cases of  $k_{31}$  vs. time (Fig. 4 (b)) and  $fc_{31}$  vs. time (Fig. 4 (c)). The giant  $k_{31}$  with excellent aging characteristics can be archived in the (100) crystal plane poled along [001] of the original cubic direction. In addition, the lowest  $fc_{31}$  below 600 Hz-m, which is obtained in the (100) plane (Fig. 4 (c)), accompanied giant  $k_{31}$  nearly 80%. The aging characteristics and the crystal plane dependences of  $\epsilon_r$ ,  $k_{31}$  and  $fc_{31}$  could be explained by the relationships between the directions of the polarization axes in the rhombohedral crystal and the

poling field.<sup>5</sup>

#### 3.4. Future research on piezoelectric materials

The Young's modulus ( $Y^E$ ) of PZNT91/09 single crystals with giant  $k_{31}$  ( $Y^E=0.89 \times 10^{10}$  N/m<sup>2</sup>) is one order of magnitude smaller than the  $Y^E$  ( $6 \sim 9 \times 10^{10}$  N/m<sup>2</sup>) of PZT ceramics and, roughly speaking, one order of magnitude larger than the  $Y^E$  ( $0.05 \times 10^{10}$  N/m<sup>2</sup>) of rubber.<sup>3</sup> It was thought that the origin of giant  $k_{31}$  in PZNT91/09 single crystals was due to the mechanical softness of the materials as mentioned previously. Namely, the most important factor to realize high piezoelectricity is easily symmetrical deformation in ferroelectric rhombohedral phase by the poling field.<sup>5</sup> Figure 5 show the relationships with  $k_{31}$  and  $k_{33}$  vs.  $Y^E$  on various kinds of single crystals and ceramics reported. There is a linear relationship with  $k_{31}$  vs.  $Y^E$  and  $k_{33}$  vs.  $Y^E$ . Furthermore, there is a blank space between  $Y^E$  of PZNT91/09 single crystals and  $Y^E$  of ordinary piezoelectric materials. Therefore, new piezoelectric materials including lead free compositions with higher  $k$  should be investigated to clarify the blank space, such as the researches for elements softened the materials with a rhombohedral perovskite phase.

#### 4. Conclusions

(100) plane PZNT91/09 single crystals with giant  $k_{31}$  and PZNT91/09 single crystals with various kinds of crystal planes such as (110) and (111) were evaluated to compare with PZT ceramics. The origin of giant  $k_{31}$  was due to the easily symmetrical deformation by poling field, which is the intrinsic property in the rhombohedral PZNT91/09 single crystal because of the materials with the relatively small Young's modulus. In addition, it was clarified that the effect of grain boundaries on the piezoelectric properties and the effect of crystal planes on their aging characteristics.

#### Acknowledgments

This work was partly supported by a Grant-in-Aid for Scientific Research (C) (No. 12650327) from the Ministry of Education, Culture, Sports, Science and Technology, and the Research Foundation between the Academy and Industry of Fukuroi City. The authors would like to thank the Research Laboratory of Kawatetsu Mining Co., Ltd. for supplying the single-crystal samples and the Materials Research Center of TDK Corporation for useful discussions on future piezoelectric materials.

#### References

1. Kuwata J., Uchino K. and Nomura S., Dielectric and piezoelectric properties of  $0.91\text{Pb}(\text{Zn}_{1/3}\text{Nb}_{2/3})\text{O}_3\text{-}0.09\text{PbTiO}_3$  single crystals, *Jpn. J. Appl. Phys.*, 1982, **21**, 1298-1302.
2. Ogawa, T., Yamauchi Y., Numamoto Y., Matsusita M. and Tachi Y., Giant electromechanical coupling factor of  $k_{31}$  mode and piezoelectric  $d_{31}$  constant in  $\text{Pb}[(\text{Zn}_{1/3}\text{Nb}_{2/3})_{0.91}\text{Ti}_{0.09}]\text{O}_3$  piezoelectric single crystal, *Jpn. J. Appl. Phys.*, 2002, **41**, L55-L57.
3. Ogawa T. and Numamoto T., Origin of giant electromechanical coupling factor of  $k_{31}$  mode and piezoelectric  $d_{31}$  constant in  $\text{Pb}[(\text{Zn}_{1/3}\text{Nb}_{2/3})_{0.91}\text{Ti}_{0.09}]\text{O}_3$  single crystal, *Jpn. J. Appl. Phys.*, 2002, **41** 7108-7112.
4. Jaffe, B., Cook, JR., W. R. and Jaffe, H., *Piezoelectric Ceramics*, Academic Press, New York, 1971, pp.135-150.
5. Ogawa T. and Numamoto T., Crystal orientation dependence and aging of giant electromechanical coupling factor of  $k_{31}$  mode and piezoelectric  $d_{31}$  constant in  $\text{Pb}[(\text{Zn}_{1/3}\text{Nb}_{2/3})_{0.91}\text{Ti}_{0.09}]\text{O}_3$  single crystals, *Transactions of the MRS of Japan*, 2003, **28**, 129-132.

Fig. 1 Temperature dependences of (a) coupling factors ( $k_{31}$  and  $k_{33}$ ) and (b) frequency constants of  $k_{31}$  and  $k_{33}$  modes ( $fc_{31}$  and  $fc_{33}$ ).

Fig. 2 (a) Schematic picture for domain structures and (b) frequency responses of impedance on  $k_{31}$  mode at various DC poling fields (poling temperature: 40 degree C, poling time: 10 min).

Fig. 3 Frequency responses of impedance on (a)  $k_{31}$  ( $13^L$  mm)/  $k_{32}$  ( $4^W$  mm) modes and (b)  $k_{32}$  ( $4^W$  mm)/  $k_{31}$  ( $2^L$  mm) modes.

Fig. 4 Aging characteristics for (a)  $\epsilon_r$ , (b)  $k_{31}$  and (c)  $fc_{31}$  vs. time in (100) plane (No. 1:  $\circ$ ), (110) planes (No. 2:  $\blacktriangle$ , No. 3:  $\blacksquare$ ) and (111) planes (No. 4:  $\square$ , No. 5:  $\square$ ).

Fig. 5 Relationships with coupling factors of (a)  $k_{31}$  and (b)  $k_{33}$  vs. Young's modulus ( $Y^E$ ) in piezoelectric materials.

## Keywords (T. Ogawa)

1. Relaxor single crystals
2. Perovskites
3. Grain boundaries
4. Ferroelectric properties
5. Piezoelectric properties

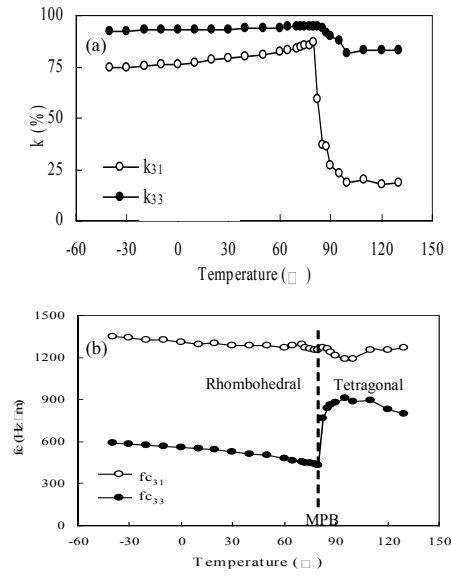


Fig.

1

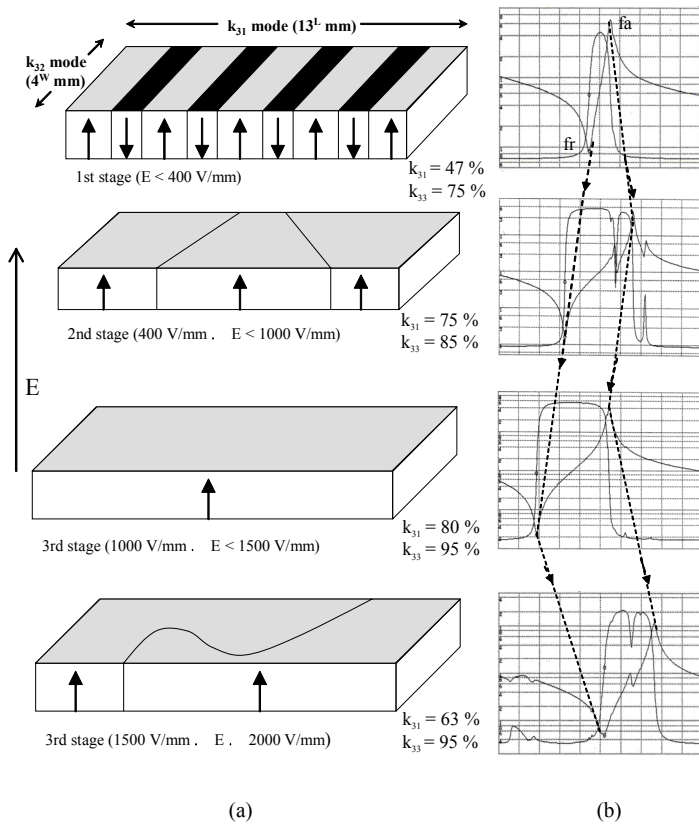


Fig.

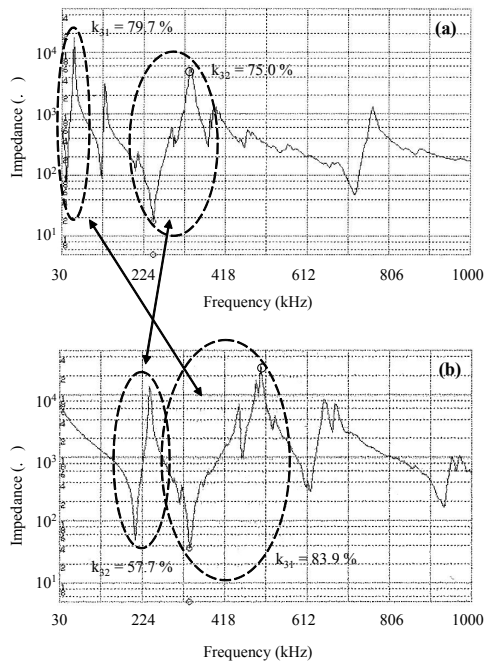
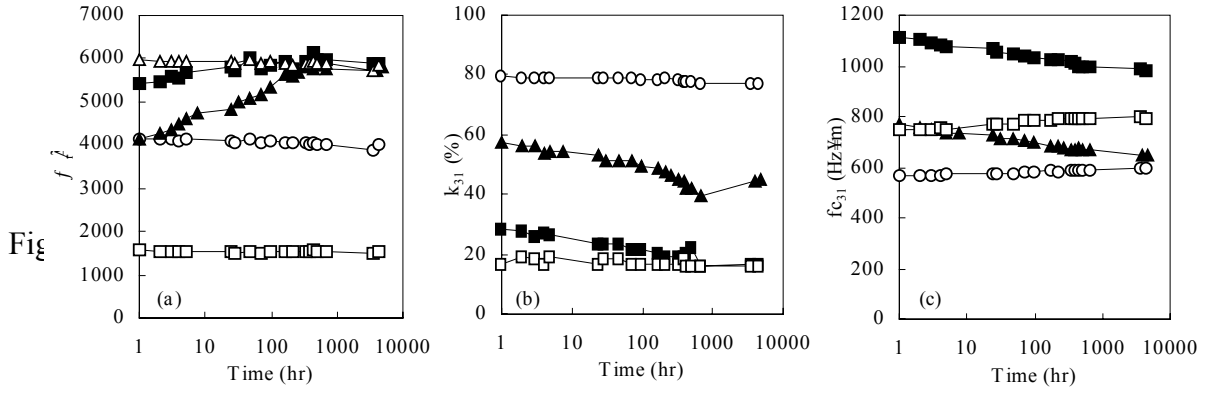


Fig.





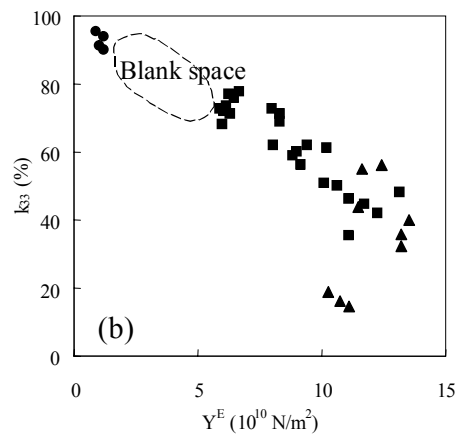
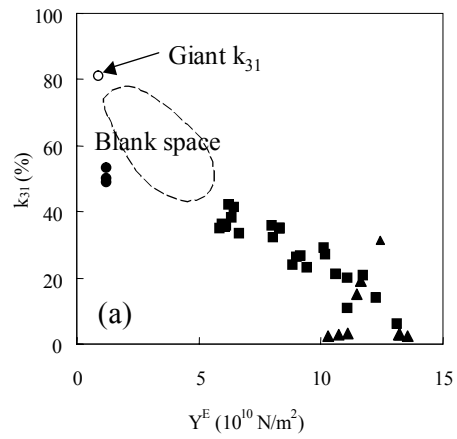


Fig. 5